

**Space for Lease Information:**

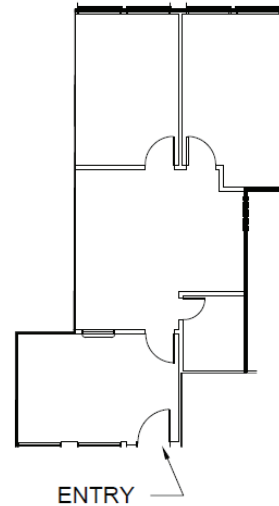
3925 N. I-10 Service Rd. W.  
Metairie, LA 70002

**Suite:** 225

**RSF:** 807

**Comments:**

Three private offices and an  
open area that could service  
as a meeting room or  
reception area.



## Contact

Elizabeth Hughes  
1st Lake Commercial Properties, Inc.  
3925 N. I-10 Service Rd. Suite 130  
Metairie, LA 70002  
504.455.8644 Fax: 504.885.4941  
Licensed in the State of Louisiana

The foregoing is solely for information purposes and is subject to change without notice. Subject to errors, omissions, changes in terms and conditions prior to lease or withdrawal without notice.