

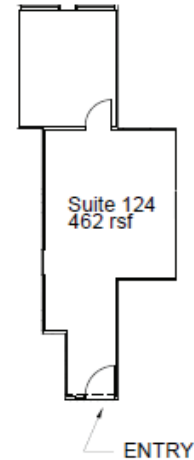
Space for Lease Information:

3925 N. I-10 Service Rd  
Metairie, LA 70002

Suite: 124

RSF: 462

Comments: Two room office  
on the first floor, ideal for 1-2  
person businesses, such as an  
attorney's office, an accounting  
space, or a therapist office.



## Contact

Elizabeth L. Hughes  
1st Lake Commercial Properties, Inc.  
3925 N. I-10 Service Rd. Suite 130  
Metairie, LA 70002  
855.401.2600 Fax: 504.885.4941  
Licensed in the State of Louisiana

The foregoing is solely for information purposes and is subject to change without notice. Subject to errors, omissions, changes in terms and conditions prior to lease or withdrawal without notice.