

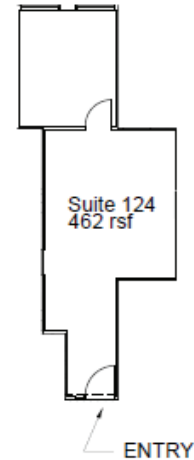
Space for Lease Information:

3925 N. I-10 Service Rd
Metairie, LA 70002

Suite: 124

RSF: 462

Comments: Two room office
on the first floor, ideal for 1-2
person businesses, such as an
attorney's office, an accounting
pace, or a therapist office.



Contact

Elizabeth L. Hughes
1st Lake Commercial Properties, Inc.
3925 N. I-10 Service Rd. Suite 130
Metairie, LA 70002
504.455.8644 Fax: 504.885.4941
Licensed in the State of Louisiana

The foregoing is solely for information purposes and is subject to change without notice. Subject to errors, omissions, changes in terms and conditions prior to lease or withdrawal without notice.