

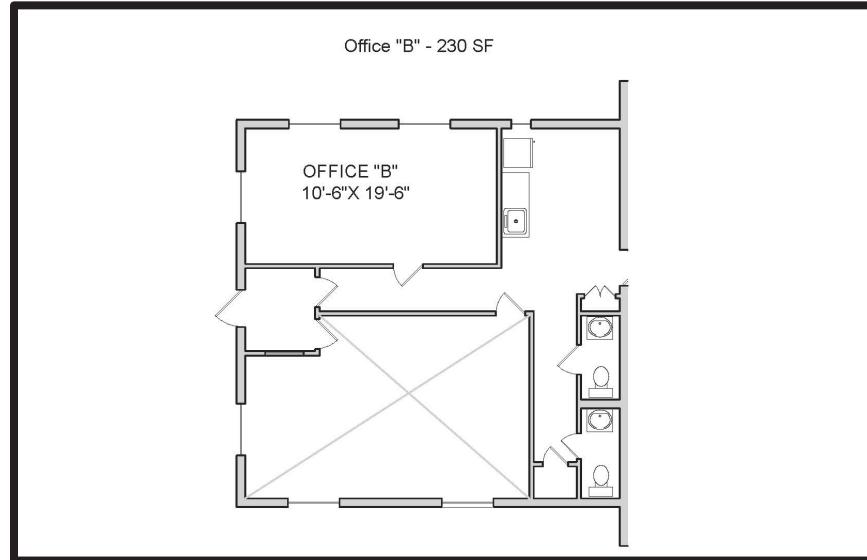
Space for Lease Information

Address:
1225 27th St.
Kenner, LA 70062

Suite: B

RSF: 230

Comments: Large single
office with common area
kitchenette and bathroom.



Contact

Elizabeth Hughes
1st Lake Commercial Properties, Inc.
3925 N. I-10 Service Road Suite 130
Metairie, LA 70002
(504) 455-8644 FAX (504) 885-4941
Licensed in the State of Louisiana

The foregoing is solely for information purposes and is subject to change without notice. Subject to errors, omissions, changes in terms and conditions prior to lease or withdrawal without notice.