

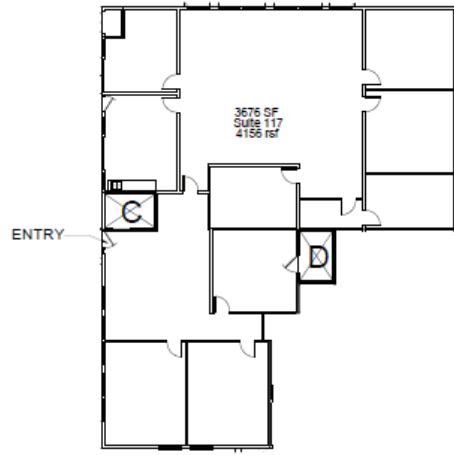
Space for Lease Information:

3925 N. I-10 Service Rd  
Metairie, LA 70002

Suite: 117

RSF: 4,156

Comments: First floor expansive suite full of natural light with kitchen and private courtyard with separate entrance. Ideal for co-working space and team collaboration. Renovated! New carpet, paint and new kitchen, too!



## Contact

Elizabeth L. Hughes  
1st Lake Commercial Properties, Inc.  
3925 N. I-10 Service Rd. Suite 130  
Metairie, LA 70002  
855.401.2600 Fax: 504.885.4941  
Licensed in the State of Louisiana