

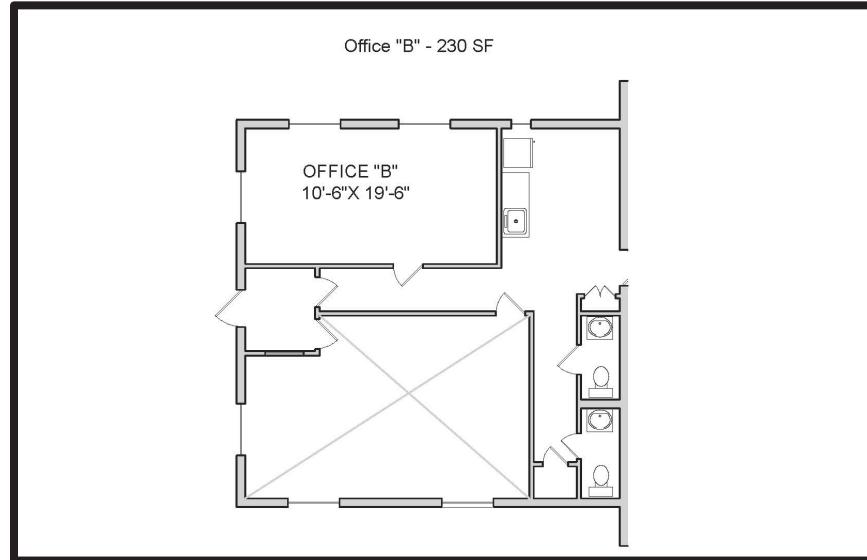
## Space for Lease Information

Address:  
1225 27<sup>th</sup> St.  
Kenner, LA 70062

Suite: B

RSF: 230

Comments: Large single  
office with common area  
kitchenette and bathroom.



## Contact

Elizabeth Hughes  
1<sup>st</sup> Lake Commercial Properties, Inc.  
3925 N. I-10 Service Road Suite 130  
Metairie, LA 70002  
855.234.1278 FAX ( 504) 885-4941  
Licensed in the State of Louisiana

The foregoing is solely for information purposes and is subject to change without notice. Subject to errors, omissions, changes in terms and conditions prior to lease or withdrawal without notice.