

**Space for Lease Information:**

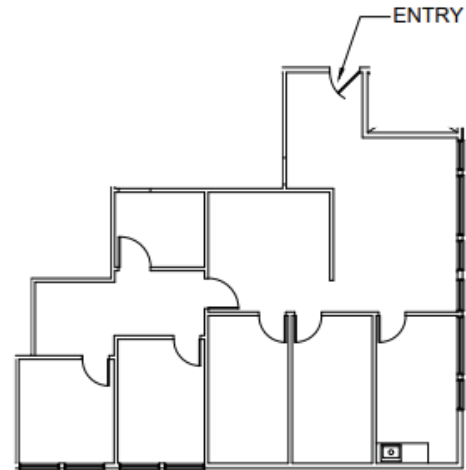
3925 N. I-10 Service Rd. W.  
Metairie, LA 70002

**Suite:** 201 B

**RSF:** 1,432

**Comments:**

Second floor suite with four  
offices, kitchenette, and two  
open areas that could be  
meeting or reception spaces.



## Contact

Elizabeth Hughes  
1st Lake Commercial Properties, Inc.  
3925 N. I-10 Service Rd. Suite 130  
Metairie, LA 70002  
855.234.1278 Fax: 504.885.4941  
Licensed in the State of Louisiana

The foregoing is solely for information purposes and is subject to change without notice. Subject to errors, omissions, changes in terms and conditions prior to lease or withdrawal without notice.