

Space for Lease Information:

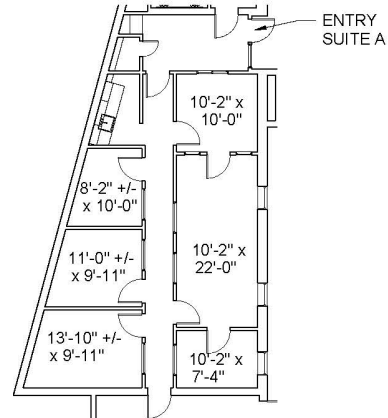
4641 Fairfield St.
Metairie, LA 70006

Suite: A

RSF: 1,401

Comments:

Close proximity to West Esplanade Ave. and Clearview Pkwy. Gated parking lot with 24-hour access for tenants. Recently renovated building with elevator access to 2nd floor. Great restaurants and stores nearby.



SUITE A
1,401 RSF

Contact

1st Lake Commercial Properties, Inc.
3925 N. I-10 Service Rd. Suite 130
Metairie, LA 70002

855.234.1278 Fax: 504.885.4941
Licensed in the State of Louisiana

The foregoing is solely for information purposes and is subject to change without notice. Subject to errors, omissions, changes in terms and conditions prior to lease or withdrawal without notice.