

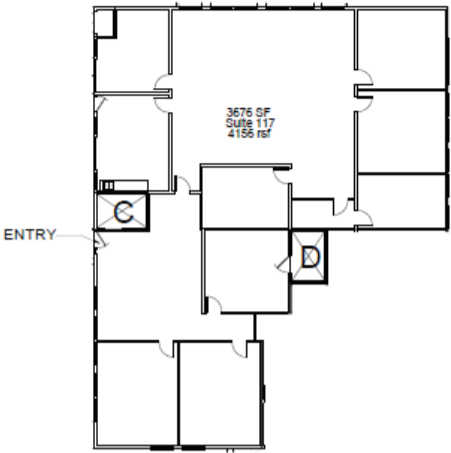
Space for Lease Information:

3925 N. I-10 Service Rd  
Metairie, LA 70002

Suite: 117

RSF: 4,156

Comments: First floor expansive suite full of natural light with kitchen and private courtyard with separate entrance. Ideal for co-working space and team collaboration. Renovated! New carpet, paint and new kitchen, too!



**Contact**

Elizabeth L. Hughes  
1st Lake Commercial Properties, Inc.  
3925 N. I-10 Service Rd. Suite 130  
Metairie, LA 70002  
855.234.1278 Fax: 504.885.4941  
Licensed in the State of Louisiana

The foregoing is solely for information purposes and is subject to change without notice. Subject to errors, omissions, changes in terms and conditions prior to lease or withdrawal without notice.