

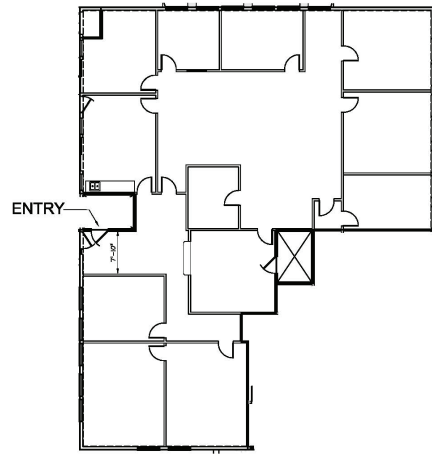
Space for Lease Information:

3925 N. I-10 Service Rd
Metairie, LA 70002

Suite: 117

RSF: 4,156

Comments: First floor expansive suite full of natural light with kitchen and private courtyard with separate entrance. Idea ofr co-working space and team collaboration. Renovated! New carpet, paint and new kitchen, too!



Contact

Elizabeth L. Hughes
1st Lake Commercial Properties, Inc.
3925 N. I-10 Service Rd. Suite 130
Metairie, LA 70002
504.455.8644 Fax: 504.885.4941
Licensed in the State of Louisiana