

Space for Lease Information:

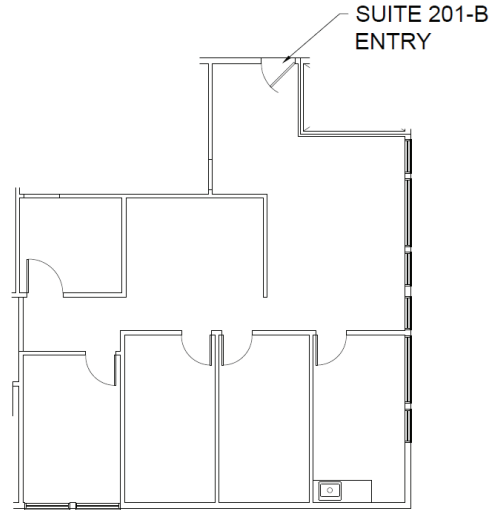
3925 N. I-10 Service Rd. W.
Metairie, LA 70002

Suite: 201 B

RSF: 1,258 (Proposed)

Comments:

Second floor suite with four
offices, kitchenette, and two
open areas that could be
meeting or reception spaces.



Contact

Elizabeth Hughes
1st Lake Commercial Properties, Inc.
3925 N. I-10 Service Rd. Suite 130
Metairie, LA 70002
855.401.2600 Fax: 504.885.4941
Licensed in the State of Louisiana

The foregoing is solely for information purposes and is subject to change without notice. Subject to errors, omissions, changes in terms and conditions prior to lease or withdrawal without notice.