

**Space for Lease Information:**

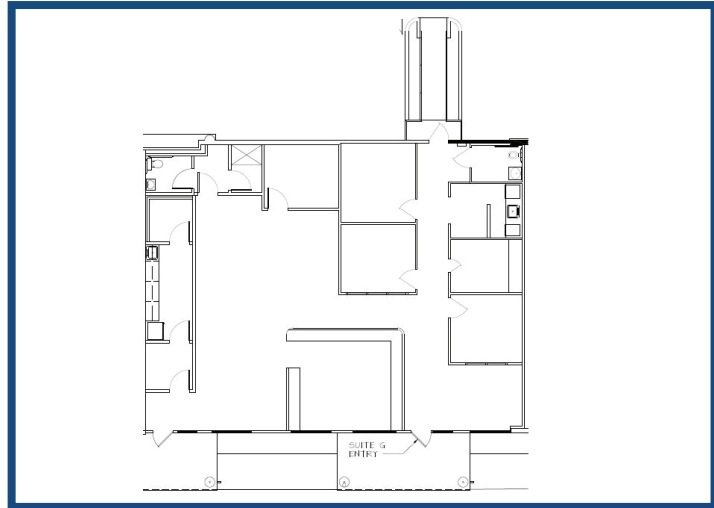
3440 Division Street  
Metairie LA 70002

**Suite:** G

**RSF:** 2,689

**Comments:**

NNN Lease Type; Formerly a chiropractic practice including reception area, business counter, 5 - 6 exam rooms, multiple water sources, lead-lined x-ray room and laundry area. Rear entrance, 2 front entrances.



## Contact

Elizabeth L. Hughes  
1st Lake Commercial Properties, Inc.  
3925 N. I-10 Service Rd. Suite 130  
Metairie, LA 70002  
504.455.8644 Fax: 504.885.4941  
Licensed in the State of Louisiana

The foregoing is solely for information purposes and is subject to change without notice. Subject to errors, omissions, changes in terms and conditions prior to lease or withdrawal without notice.