

Space for Lease Information:

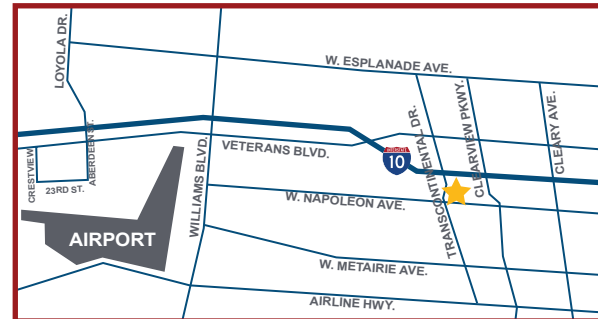
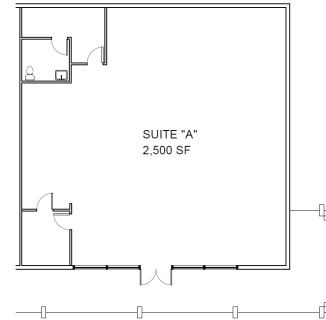
2221 Transcontinental Dr.
Metairie, LA 70002

Suite: A

SF: 2,500

Comments:

Endcap space in vibrant Metairie
strip shopping center with good visibility.



Contact

Elizabeth L. Hughes
1st Lake Commercial Properties, Inc.
3925 N. I-10 Service Rd. Suite 130
Metairie, LA 70002
504.455.8644 Fax: 504.885.4941
Licensed in the State of Louisiana

The foregoing is solely for information purposes and is subject to change without notice. Subject to errors, omissions, changes in terms and conditions prior to lease or withdrawal without notice.